



Overview

The Vilink TM900 is an economic compact Fiber Optic Add Drop STM-1 Multiplexer designed to add & Drop up to 56 x G.703E1 or DS1-T1 channels, 3 x E3/T3 channels and 4 x 10/100M Ethernet ports.

With up to 4 aggregate Optical or Electrical STM-1 interfaces, the TM900 can offer the service provider a versatile protection scheme including SNCP-I and MSP (1+1) protection for both Ring and Linear Network Topology.

All interface are fully compliant with ETSI standards and ITU recommendations. The TM900 provides powerful Operation, Administration, Maintenance and Provisioning (OAM&P) functionality, including fault management, performance monitoring, configuration management, and network security management. Through console port, LAN port, and DCC channel the OAM&P can be achieved both locally and remotely via SNMP or menu-driven interfaces.

The TM900 Network management System (NMS) provides a complete set of operation interfaces, that are consistent with the Telecommunication Management Network (TMN) concept (ITU recommendation M.30, G.784) for SDH Network Element and Operation System (NE/OS), NE/NE and NE/Craft Communications. User can easily operate TM900 from both locally and remotely for centralized management.

Features

- Add & Drop STM-1 Multiplexer
- Tributary Modules:
 - 4/12/20/28 Channel E1/T1
 - 28 Channel E1/T1
 - 1/3 Channel E3/T3
 - 4 Port Ethernet
- Hot Swappable AC/DC Power Module
- SNCP-I Protection
- MSP (1+1) Protection Optional
- Expandable up to 4x STM-1 Module
- External/Internal/Line Timing
- Support VCAT, GFP, LCAS
- Alarm Suppression, Marking, Report

Applications

- Central Office Interconnects
- Local Exchange Digital Service
- PCS Trunking
- DSLAM Extensions
- ITS Traffic Applications
- METRO Applications
- SCADA Networks
- Corporate and Enterprise Networks
- Utility System
- Military Applications

Ordering Information

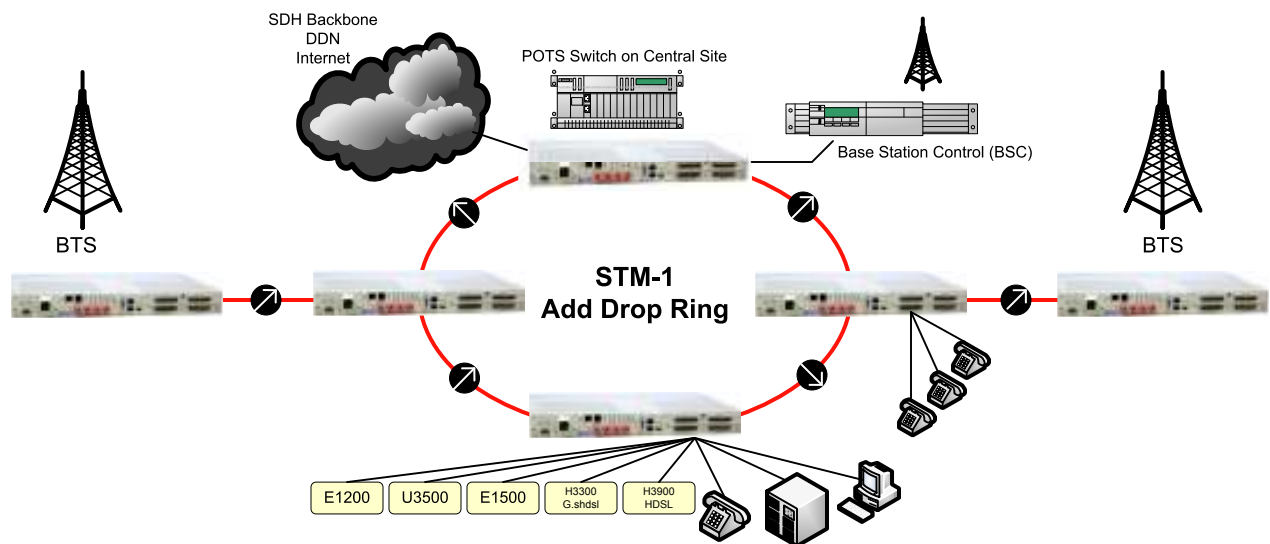
Model	Descriptions
TM9004E14ESC03	Compact Add Drop STM-1 Multiplexer, 1x1310nm SC SM Interface, 4xE1, 4x10/100M, 90~240 VAC
TM9004E14E2SC03-48	Compact Add Drop STM-1 Multiplexer, 2x1310nm SC SM Interface, 4xE1, 4x10/100M, -48 VDC

*** Please Consult Factory for Additional Model Numbers***

System	
Error Rate	1 in 10 ⁹ or Better
Speed	STM-1
Clock Source	Internal/External/STM-1 Line
NMS	SNMP V1
OSS Interface	10/100 Base T
NE/NE Interface	DCC/HDLC/Ethernet Type II
Environment:	
Operating	-10 ⁰ C to +65 ⁰ C
Storage	-40 ⁰ C to + 95 ⁰ C
Humidity	95% Non-Condensing
Physical:	
Dimension	19" x 1.75" x 10.5"
Power	90 ~ 240 VAC / 48 VDC
Optical Module:	
STM-1	2
Data Rate	140 Mbps
Wavelength	1310nm/1550nm
Distance	30Km/50Km/100Km
Fiber	Duplex Module/Bi-Di Module
Connector	SC/FC

E1 Module:	
Channel	4~28
Line Rate	2.048 Mbps 50 ppm
Line Code	AMI/HDB3
Input/Out Signals	ITU G.703
Jitter	ITU G.824
Line Impedance	120 Ohms Twisted Pair
Connectors	SCSI-II 68 Pins
T1 Module:	
Channel	4~28
Line Rate	1.544 Mbps 50 ppm
Line Code	AMI/B8ZS
Input/Out Signals	DSX-1 0dB to -30dB w/ALBO
Jitter	ITU G.824
Line Impedance	120 Ohms Twisted Pair
Connectors	SCSI-II 68 Pins
Ethernet Module:	
Port	4
Data Rate	10/100M
Layer 2 Protocol	Ethernet
Process Protocol	GCAT, GFP, LAPS, LCAS
Mapping	nxVC12, nxVC11, nx VC3
Connector	RJ45

Application



Typical TM900 Application